

INSTRUCTIONS

G1 WALL MOUNTING

GRIPPIT

- 1** Select a suitable wall onto which to mount the G1 Board. At a distance of 140mm from the top of the desired height, mark the drill positions for the hanging brackets as indicated in Fig.1
 - 2** Drill and plug the wall in the marked positions.
 - 3** Using the short screws provided, fasten the hanging brackets to the wall Fig.2. Hang the GRIPPIT on the brackets.
- THE FOLLOWING IS OPTIONAL - FOR EXTRA SECURITY
- 4** Mark where the bottom of the board finishes Fig.3. Remove the board. Mark, drill, plug and screw to the optional bottom bracket to the wall.
 - 5** Rehang the G1 board and screw through the bracket into the bottom of the frame.

FIGURE 1

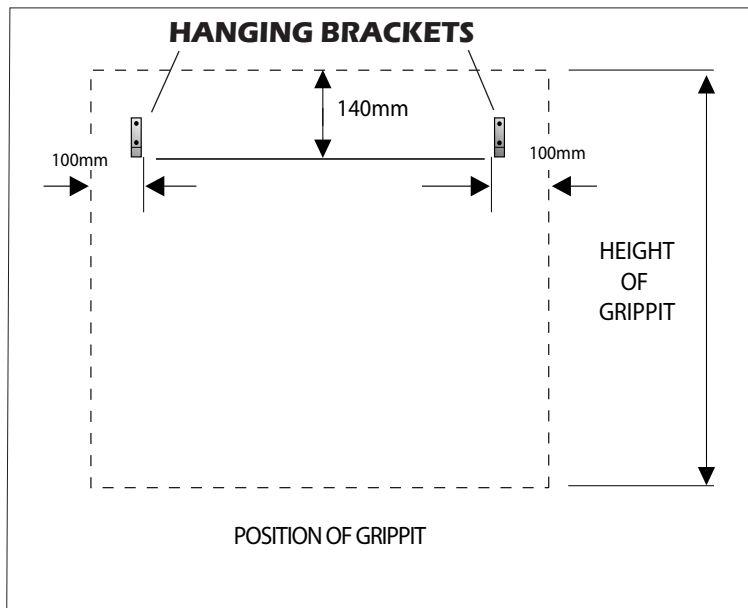


FIGURE 2

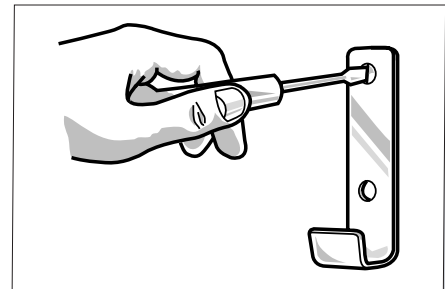
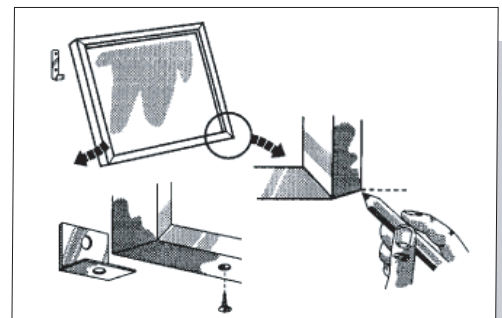


FIGURE 3



OPERATION & MAINTENANCE

MAINTENANCE

The unit should be cleaned with detergent and water.
Metal polish or abrasive substances should not be used.

TEL: 0870 080 2326

www.grippit.co.uk